

TODAY'S RADIO BROADCASTS

7 A. M.

W-G-N—"Good Morning," musical program.
WLS—Paul Rader.
KYW—Musical Clock.
WMAQ—Littlest Girl; morning worship.
WJJD—Texas Crystals.

7:30 A. M.

WMAQ—Pepper Pat.
WCFI—Cheerio.
WBBM—Christian Science: Time Saver.
WIBO—Time Signal Express.
WLS—Prairie Ramblers; Jolly Bill and Jane.
WJJD—Happy On Lucky Time.

8 A. M.

WLS—Steamboat Bill; Halph Emerson.
WCFI—Aeroplane club; Time Parade.

8:30 A. M.

W-G-N—"Good Morning," musical program.
WMAQ—Vic and Sade; Nothing but the Truth.
WBBM—Modern Living.
WLS—Organ; markets; news.

9 A. M.

W-G-N—Gabe Wetner, organ.
WBBM—J. Wilson Doty.
WCFI—German entertainment.
WMAQ—Meditation.
WAAF—Sing and Sweep.
WGES—Canary Concert.

9:15 A. M.

W-G-N—Clara, Lu 'n' Em.
WLS—Mac and Bob.
KYW—Piano Potpourri.

9:30 A. M.

W-G-N—Board of Trade markets.
WIBO—Cooking club.
WBBM—Beauty chat.
WMAQ—Happy Jack.
KYW—U. S. Navy Band.

9:35 A. M.

W-G-N—Mail Box.
WMAQ—Emily Post.
WLS—Halph and Hal.

10 A. M.

W-G-N—Allan Grant, pianist.
WBBM—Morning Moods.
WCFI—Dance music.
WMAQ—Melody Three.
WIBO—Snackling Melodies.

10:15 A. M.

W-G-N—Melody Favorites, organ.
WENR—Eddie Mae Gordon.
KYW—Radio Household Institute.

10:25 A. M.

W-G-N—Board of Trade markets.
WLS—Weather forecast; Digest of the News.
WMAQ—Sonata Hechtal.
WBBM—Norm Sherr and Hugh Sutton.
WAAF—Eddie Marine Harvey's club.
WGES—Cantata Minstrels.
WENR—Jackie Heffer.
WSBC—John Stamford, tenor.

10:30 A. M.

W-G-N—"The Grand Old Hymns."
WJJD—Mary Alden.
WENR—Sonata Hechtal.

11 A. M.

W-G-N—Music Weavers' request program.
WENR—Smack Out.
WMAQ—Spanish Lessons.
KYW—Morning Melodians.
WIBO—Organ.

11:15 A. M.

WBBM—Gene and Charlie.
WENR—Piano Duo.

11:30 A. M.

W-G-N—Board of Trade markets.
KYW—Farm and Home Hour.
WBBM—Concert Miniatures.
WJJD—Buckle Busters.
WMAQ—On Wings of Song.

11:35 A. M.

W-G-N—"Painted Dreams," sketch.
11:50 A. M.

W-G-N—Music Weavers' request program.
NODN.

12:00 P. M.

W-G-N—Mid-day service, the Rev. Gerald D. Moore.
WBBM—George Hall's orchestra; news.
WIBO—Music; news; reading room.
WLS—Maque City Four.
WMAQ—Red Nichols' orchestra; markets.

12:30 P. M.

W-G-N—Atlantic City Musicale.
WJJD—Farmer Rusk.
WMAQ—The Ambassadors; Patricia Gordon.

1 P. M.

W-G-N—Allan Grant, pianist.
WMAQ—Words and Music.
KYW—Jack Chapman's orchestra.
WLS—Slim and Stud.

1:15 P. M.

W-G-N—Palmer House ensemble.
WBBM—"Well Tempered Clavichord."

1:30 P. M.

WBBM—School of the Air.
WMAQ—Public school talk.

1:45 P. M.

W-G-N—Arthur Oberg, tenor.
WCFI—Drama.
KYW—Little Concert.
WIBO—Reporter; Patricia Goldberg.

2 P. M.

W-G-N—Palmer House ensemble.
WLS—Betty and Bob.
WBBM—Beauty chat.
WSBC—Poet's Corner.
WIBO—Radio Gossip club.

2:10 P. M.

W-G-N—Evelyn Renee, songs.
2:20 P. M.

W-G-N—Palmer House ensemble.
2:30 P. M.

W-G-N—June Baker.
KYW—Women's Radio Review.
WAAF—Bridge class.

3 P. M.

W-G-N—Dick Hayes, baritone.
WJJD—Woman's club.
WIBO—Cora Long; Diet Air.
WBBM—Frank Westphal's orchestra.
WMAQ—Gullid play.
WCFI—Frank J. Kaaper, civic talk.

3:30 P. M.

W-G-N—Columbia Artists' recital.
KYW—The Two Doctors.
WCFI—Stintales.
WBBM—D. A. H. program.
WENR—Rhythm Boys.

3:45 P. M.

WAAF—Polo program
WJJD—Bridge class.
WENR—Lady Next Door.

4 P. M.

W-G-N—Hondollers, string trio.
WIBO—Paul Shuken.
WBBM—Howard Neumiller.
WCFI—Junion Federation club.
WENR—Lee Sims and orchestra.

4:15 P. M.

WIBO—Sis Gleason.
WENR—The Caravan.
WAAF—Sports review.

4:30 P. M.

W-G-N—Paul Woods, baritone.
WENR—Irma Glen.

Today's Features

6 p. m.—W-G-N—Uncle Quin's Day Dreamers—children's sketch.

7:15 p. m.—WBBM—Harricr Cruise and Frank Westphal's orchestra.

8 p. m.—WIBO—Basketball—Northwestern university vs. Wisconsin university.

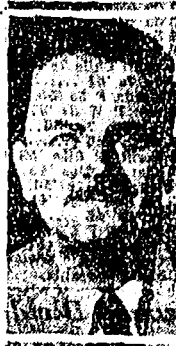
8:30 p. m.—WMAQ—Paul Whiteman's orchestra with a galaxy of guest stars.

9:30 p. m.—WENR—National Radio Forum—Ogden L. Mills, secretary of the treasury, speaking on "The Federal Budget."

9:45 p. m.—W-G-N—The Minstrel Show, with Hank Moeller, Hal Gilles, Jack Spencer, Tom Dick and Harry, Minstrel Ensemble, and Del Owen and the Minstrel orchestra.

10:15 p. m.—W-G-N—Morgan and Milligan, detective story drama, "The Missing Mayor."

10:30 p. m.—W-G-N—Guy Lombardo's orchestra.



QUIN RYAN.

CHICAGO WAVE LENGTH.

Meters.	Kc.	Meters.	Kc.
W-G-N ... 446.4	720	WAAF ... 335.0	900
WIBO ... 537.4	560	WCFI ... 309.1	970
WPC ... 635.4	500	KYW ... 293.0	1020
WMAQ ... 447.5	670	WBBM ... 272.0	1080
WBBM ... 380.4	770	WGES ... 220.4	1360
WENR ... 380.4	870	WJJD ... 295.3	1130
WLS ... 344.6	870	WSBC ... 247.8	1210

4:15 P. M.

W-G-N—Rondollers, string trio.
WCFI—Parade of Stars.
WMAQ—Slow River.
WBBM—"Sleepy Valley."

5 P. M.

W-G-N—"The Devil Bird," sketch.
WBBM—Granddad Burton's stories.
WMAQ—Del Lampe's orchestra.
WCFI—Tripoli Trio.
KYW—Reporter; Mel Stitzel.

5:15 P. M.

W-G-N—W-G-N Concert orchestra.
KYW—Penrod and Sam.
WBBM—Tarzan of the Apts.
WENR—"Dick Daring."

5:30 P. M.

W-G-N—The Singing Lady.
WCFI—Father Hammond.
WBBM—Skippy.
KYW—Uncle Bob.
WMAQ—Al Bernard.

5:45 P. M.

W-G-N—Little Orphan Annie.
WBBM—Lone Wolf Tribe.
WMAQ—Dance Masters.
WJJD—Howard Peterson, organ.

6 P. M.

W-G-N—Uncle Quin's Day Dreams.
WIBO—German program.
WBBM—Orchestra program.
KYW—Jane Froman.
WMAQ—Harold Van Horne.

6:15 P. M.

W-G-N—The Secret Tree sketch.
WMAQ—Ray Knight, sketch.
WBBM—Jack Brooks and Norm Sherr.
WJJD—Sports Recel.
WGES—Ceal and Bally.
WCFI—Eddy Hanson.

6:30 P. M.

W-G-N—Hal Kemp's orchestra.
WCFI—California Rattblers.
WBBM—Sports Review.
WENR—What's the News?
WMAQ—Concert ensemble.

6:45 P. M.

W-G-N—Tom, Dick and Harry.
WENR—The Goldbergs.
WBBM—Boake Carter.
WCFI—Al Handler's orchestra.
WMAQ—The Longfellow.

7 P. M.

W-G-N—Whispering Jack Smith and the Jambalagbirds.
WIBO—Cerny ensemble.
WJJD—Half Pint Jaxon.
WLS—Marimba band.

7:15 P. M.

W-G-N—Singin' Sam.
WBBM—Harricr Cruise.
KYW—Merle Jacobs' orchestra.

7:30 P. M.

W-G-N—Fu Manchu mystery.
WIBO—Local Boys.
KYW—Dr. Bundezen.
WBBM—Charlie Hamp.
WMAQ—Lawrence Tibbett.
WLS—Maurie Sherman's orchestra.

7:45 P. M.

WLS—The Country Doctor.
WBBM—Correy Lynn's orchestra.
KYW—Chandu, the Magician.
WIBO—Francis B. Allegretti, civic talk.

8 P. M.

W-G-N—Ruth Eiting with Leonard Hayson's orchestra.
WIBO—Basketball.
WJJD—Dance orchestra.
KYW—Mark Fisher's orchestra.
WBBM—Jack Brooks, Song Souvenirs.
WMAQ—The Gypsies.
WLS—Minstrels.

8:15 P. M.

W-G-N—Four Milk Brothers.
WBBM—Charlie Straight's orchestra.
WCFI—Night Court.

8:30 P. M.

W-G-N—Evening in Paris, mystery sketch.
WMAQ—Paul Whiteman's orchestra.
WENR—Melody Moments.
WBBM—"Price of Freedom," drama.
WCFI—Armour Glee club.
KYW—The Cadets; Don Pedro's orchestra.

9 P. M.

W-G-N—Pat Together Drama.
WBBM—Morton Downey.
WENR—Morgan L. Enstman's orchestra.
WMAQ—Alto Joy.
WCFI—Mona Van.
WMAQ—Alto Joy.

9:15 P. M.

W-G-N—"Easy Aces," comedy sketch.
KYW—Alto Joy.
WBBM—Hank Mahen's orchestra.

9:30 P. M.

W-G-N—Tomorrow's Tribune.
WIBO—Little Barry and the Rhythm Girl.
WBBM—Harriet Cruise and Four Norsemen.
WENR—National Radio Forum.
WCFI—Elmer's Rubber, orchestra.

9:45 P. M.

W-G-N—Headlines of Other Days.
10:15 P. M.

W-G-N—Time signal; weather forecast; the minstrel show.
WBBM—Myrt and Marge.
WMAQ—Jingle Joe.

10 P. M.

WMAQ and WENR—Amos and Andy.
KYW—News and Mark Fisher's orchestra.

10:15 P. M.

W-G-N—"Milk and Mulligan," sketch.
WMAQ—Dan and Sylvia.
WENR—Concert orchestra.
WIBO—Radio Dan.

10:30 P. M.

W-G-N—Guy Lombardo's orchestra.
WCFI—Eddie Makin's orchestra.
KYW—Don Pedro's orchestra.

11 P. M.

W-G-N—Hal Kemp's orchestra.
WMAQ—Mark Fisher's orchestra.
WIBO—Organ.
WENR—Eugene Columbus' orchestra.
KYW—Jack Chapman's orchestra.

11:15 P. M.

W-G-N—Milk and Mulligan.
WSBC—Jerry Sullivan.
WMAQ—Anson Week's orchestra.

11:30 P. M.

W-G-N—Clyde McGray's orchestra.
WENR—Erdine Tall's orchestra.
WMAQ—Tweet Hogan's orchestra.

11:45 P. M.

W-G-N—Hut King's orchestra.
WCFI—Dave Urell's orchestra.

MIDNIGHT.

W-G-N—Clyde McGray's orchestra.
WENR—Maurie Sherman's orchestra.
KYW—Lew Diamond's orchestra.
WBBM—Correy Lynn's orchestra.
WMAQ—Art Kasef's orchestra.

12:00 A. M.

W-G-N—Hal Kemp's orchestra.
WBBM—Charles Straight's orchestra.
WMAQ—Frankie Master's orchestra.
WENR—Erdine Tall's orchestra.
KYW—Tweet Hogan's orchestra.