

RADIO DIAL

KMTR—870 K., 526 M.
 KFI—840 K., 468.5 M. (C)
 KMPC—710 K., 422.3 M.
 KELW—780 K., 384.4 M.
 KHJ—600 K., 331.1 M. (C)
 KPWB—950 K., 315.6 M.
 KPVD—1000 K., 299.8 M.
 KECA—1430 K., 209.7 M. (C.)
 KNX—1050 K., 283.5 M.
 KMIC—1120 K., 267.7 M.
 KOPJ—1340 K., 249.9 M.

From Programs Submitted by Stations
 (ALPHABETICALLY ARRANGED)
 (F)—Denotes feature program.
 (C)—Denotes chain broadcast.

6 to 8 a.m.
 KECA—Exercises, 7:15; Aunt Jemima (C.) 7:45.
 KFI—Market reports, 6:30; ballads at 6:45; Leslie Brisham, bass, at 7:30.
 KHJ—Rise and shine, 7-7:30; Coal and Coke, 7:30; band music, 7:45.
 KMTR—Punch and Judy, 6-7; Breakfast Club, 7-9.
 KNX—Exercises, 6:45 to 8.
 KTM—Eye Opener; ranch hour at 7.

8 to 10 a.m.
 KFI—Shell Happy Time; songs and patter at 9; English lesson, 9:30; Iris Girl, 9:45.
 KPWB—Dorothy Burnham, pianist, 8:30; Maybelle Morrison, violinist and Clarice King, soprano at 9; book review at 9:30.
 KHJ—Tropical Tramps (C.) 8; stock market reports, 8:30; Yoen's Orch., 8:40 (C); Feminine Fancies, 9:30 (C).
 KMTR—Frolic to 9; violin piano duo, 9:30.
 KNX—Prayer; Hollywood Breakfast Club, 8:15.
 KTM—Bert's Best Bets at 9.

10 a.m. to 12 Noon
 KECA—Musical Memories, 11:30; "Canny Cook," 11:45 (C).
 KFI—Woman's Magazine of the Air, 10; symphony lesson at 11 (C) (F).
 KPWB—Organ at 10; Serenaders, 10-10:30.

KPWB orchestra and soloist, 11:30.
 KHJ—Agnes White, 10:45; Ted White, songs, 11:15.
 KMTR—Happiness Girl at 10; Ralph Little's Orch., 10:30; organ, 11:30; Westlake Park Ensemble, 11; organ at 11:30.
 KNX—Eddie Albricht, 10; KNX Little Symphony, 11:15.

12 Noon to 3 p.m.
 KFI—U. S. Agriculture talk; market reports, 12.
 KPWB—Melody makers, 12:30.
 KHJ—Concert orch., 12; world-wide news at 12:30; Jr. Chamber of Commerce, 12:45; Times Forum, 1:30; Fred Horne, "China and World Peace."
 KMPC—Youngs adventurer, 1:30.
 KMTR—Prosperity hour; Banjo Boys, 1:15.
 KNX—Theo. K. Hay and symphonette, 12; Eddie Albricht, readings, 1:30.
 KTM—Organ at 1.

3 to 4 p.m.
 KECA—Jerome Powers, pianist, at 3. One-half hour in nation's capitol (C.) 3:30; Marcella Burke, Hollywood chats (F.) at 3:15.
 KFI—Winnie Fields Morre, travelogue (F) 2:15; L. A. Fire Dept. Orchestra, 2:30; Sylvia at 3:30 (F).
 KPWB—Mission vs. Los Angeles, baseball, 2:10.
 KOER—Orange show, 2:15.
 KHJ—Happy Go Lucky Hour, KPFC at 2; U.S.C. Trehan hour, 3:15; Y.M.C.A., 3:30.
 KMPC—Musical comedy at 2.
 KMTR—Spanish program, 2:30; ballroom orchestra at 3.
 KNX—Novelty orch., 3; French at 2:30; Jingle Man at 2; Astro-analyst, 3:35.
 KTM—Spanish Troubadors at 3.

4 to 6 p.m.
 KECA—Sunshine hour (C.) 4; Birthday Party (C) at 5; Maxwell House Melodies (C.) 5:30.
 KFI—KFI News Bureau, 4:15 (F); Big Brother, 4:30; Baron Keyes at 5; stock market at 5:45; Hollywood Gossip, 5:30.
 KPWB—Ray and Her Pals after game.
 KHJ—Recordings at 4; Fred Wile, Washington comment, 4:15; world-wide news, 4:45; KPFC organ and singers, 5; Manhattan Moods (C.) 5:30.
 KMPC—Playlet at 4:30.
 KMTR—Recordings; Trading Post at 4:30.
 KNX—Jack Carter, Boy from London, at 4; Big Brother, 5:15; travelogue at 5.
 KTM—Date book, 4:30.

6 to 7 p.m.
 KECA—Dance orch., 6; children's hour, 6:45.
 KFI—Radio Victor Hour (C) (F).
 KPWB—Organ at 6; Harry Jackson's Entertainers, 6:30.
 KHJ—Pianoville, 6 (F).
 KMTR—Recordings, 6; Novelty Orch., 6:30.
 KNX—Country Jane, vocalist.

7 to 8 p.m.
 KECA—Bob and Monte, 7:45; Amos 'n' Andy, 7:30; Wedgwood Nowell at 7.
 KFI—Standard Symphony Hour, 7:45 (C) Felipe Delgado, Spanish baritone, 7:30 (F); Speedway to Happiness, 7.
 KPWB—Ocell and Sally at 7; "Dancing Through the Years," 7:30.
 KOER—Orange show, 7:45.
 KHJ—Forest Lawn concert (F).
 KMTR—Popular songs, 7:15.
 KNX—Feature program (F.) 7; Royal Hidaicos, 7:30.

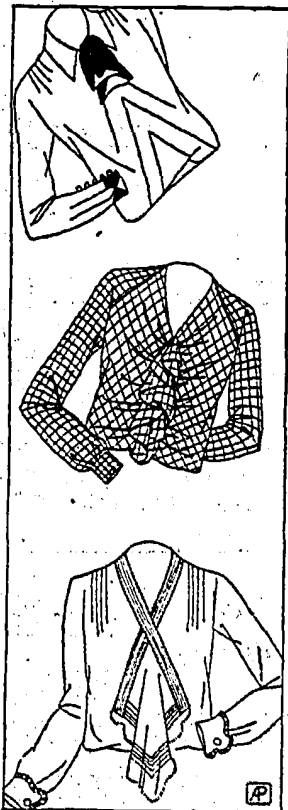
8 to 9 p.m.
 KECA—Lucky Strike hour (C.) 8.
 KFI—Arthur Lang, 8:45, and ensemble (F.) ensemble (F).
 KPWB—Olson's Club, 8; The Castillians, 8:30.
 KHJ—Merry Makers (F).
 KMTR—"On With the Dance," 8-9.
 KNX—Symphony, 8-9; soloists (F).
 KTM—Highway Highlights (F).

9 to 10 p.m.
 KECA—Memory Lane (C.) (F); Eddie Armstrong, ballads, 9:30.
 KFI—Packard Orchestra and soloist, 9:30 (F); Winifred Donaldson, contralto, 9:15.
 KPWB—Continuity program.
 KHJ—Eastman Kodak program, 9 (F); Carl Omeron and Wesley Tourtelote.
 KMPC—Dance orchestra, 9.
 KMTR—Re-created prizefight (F.) 9:30; miniature salon orchestra, 9.
 KNX—Musical Musketeers; KNX Ensemble, 9:30; prize fight, Hollywood Legion Stadium, 9:30.
 KTM—KTM Little Theater (F.)

10 p.m. to Midnight
 KECA—Ray West Cafe, 10; health exercises, 10:45 (F).
 KFI—Max Fisher Cafe Orchestra, 10:30.
 KPWB—Aarons's orchestra, 10.
 KHJ—Times' world-wide news at 10; Burnett's Dance Orchestra.
 KNX—Johnny Hamp and Kentucky Serenaders at 11:15.
 KMPC—Hill Billies, 10-11; Ray Howell, 11-12.
 KMTR—"The Old and New" songs, 10-11; musical revue at 11.
 KTM—Organ recital, 10; readers hour, 10:30.

Midnight to 1 a.m.
 KMPC, KNX, KTM—Records.

Fashion Decrees



Blouses Are Varied—
 Bernard et Cie (Above);
 Jane Regny Print;
 Redfern Model (Below)

Joan

FORESTERS TO GIVE BALL

Court Columbus No. 102, Foresters of America, will give its annual ball Saturday evening at T.V.G. Auditorium, 938 West Washington street. All other courts of Foresters and all circles of the Companions of Foresters have been invited. Music is to be provided by the Jazz Melody Boys' orchestra.

PROTESTS PROVE VAIN

Protests against the improvement of streets in the Fries avenue and A street district were denied yesterday by the City Council.