

TODAY'S RADIO PROGRAM

DIAL SETTINGS
WNAH-1450 WMCA-572
WICC-500 WINS-1010
WRCA-550 WTIC-1080
WOR-710 WNEW-1130
WLAB-800 WNHG-1340
WCSB-880 WABC-1400
WAGC-770 WAWZ-1250
WMOG-1050 WQXR-1580
WNYC-830 WNLK-1550

Notes (*) indicates program is heard on WABC and WRL:
3:00 3:15 3:30 3:45
WNAH Angel... WABC... WABC... WABC...

Daytime Features

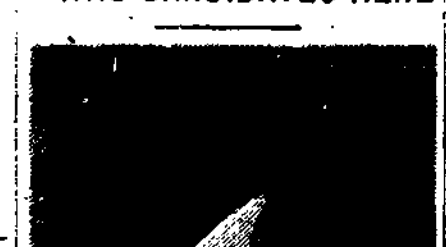
2:30-BASEBALL: Chicago Cubs vs. Cincinnati Reds (reconstruction) WMCA
3:00-ROUSE PARTY: Eliza Knox, actress, in guest WABC
3:05-SYMPOSIUM: Maxine: Piano Concerto No. 2 by Rachmaninoff WQXR

Evening Highlights

7:00-MASTERWORK HOUR: Dino Lipatti, piano soloist WNYC
7:15-TO FRANCE: Wilderzardes, stage and screen star, in guest WABC
7:30-BASEBALL: Brooklyn Dodgers vs. New York Giants WGMW, WMCA
8:00-SUSPENSE: The Steel Pigeon, a drama WQXR

3:00 3:15 3:30 3:45
WNAH Angel... WABC... WABC... WABC...
3:00 3:15 3:30 3:45
WNAH Angel... WABC... WABC... WABC...

RECRUITER INTERVIEWS WAC CANDIDATES HERE



SFC. ELSIE J. MASON

Added to the Women's Army Corps recruiting staff at New Haven recently, WAC Sergeant First Class Elsie J. Mason will be at the WAC Recruiting Training Center at Arlington Hall Station, Virginia. The area she will cover includes all of Fairfield County and some sections of New Haven county to Waterbury and Meriden. A native of Mount Vernon, N. H., SFC. Mason attended the University of New Hampshire and during World War II was a defense worker employed with the United Aircraft plant in Hartford. Her assignments also have included duty at Fort Lee and Governor's Island.

ON TELEVISION TODAY

2:00-TED MACK SHOW: Musical variety with guests (4)
2:30-JUNIOR FEATURAMA: Selected short films and cartoons for children (3)
7:00-BASEBALL: Brooklyn Dodgers vs. New York Giants (3)

3:00 3:15 3:30 3:45
WNAH Angel... WABC... WABC... WABC...
3:00 3:15 3:30 3:45
WNAH Angel... WABC... WABC... WABC...

DON'T DIG UP YOUR SEWER! For Sewer Cleaning, Call Now. ROTO-ROOTER SERVICE INC. Flexible, rubber-shod ROTO-ROOTER blades easily enter the clogged opening...

FUEL OIL BUDOLEY New England's Largest Heating Oil Terminal. Telephone Edison 6-3541

BURGHART LUMBER CORPORATION ALUMINUM LAWN SCREEN HOUSE BUY OF THE YEAR! Reg. Price \$279.00 NOW \$229.00 While They Last

DYNAMIC TV SERVICE - Call - EDISON 6-5418

TV SERVICE HOME & AUTO RADIO COURTNEY RADIO 1305 Stratford Ave., Stratford ED 7-3530 WORK GUARANTEED

MADISON BAKERY CASSELLA'S Real ITALIAN BREAD!

Office Furniture CALL FARGO'S Phone EDISON 4-2171 1001 Broad St., Bridgeport

BETTER HEARING CONSULT Van's-Beltone NOW LOCATED AT 235 JOHN STREET

STOP WALLS DAMPNESS SEEPAGE COLONIAL CEMENT BLOCK CO. Colonial Ave., Bridgeport Phone ED 5-8982

Silitec & Siliphane Wet Walls DAMPNESS SEEPAGE Control Efflorescence

ENJOY BETTER TV VIEWING CALL EDISON 6 1881 RADIO SERVICE SPECIALISTS, Inc.

CBS to Launch Comedy Show On Video

By FRED H. RUSSELL "Joe and Mabel" situation comedy series centering on the complications enveloping the romance of a big-city cab driver who would like to get married, but not just yet, and his altar-minded girl friend, will have its premiere over CBS television Tuesday night, Sept. 20, from 9 to 9:30 o'clock. Larry Bylden is Cabbie Joe Sparlow; Nita Talbot as his girl friend, Mabel Stooler; Luella Gear as Mabel's mother, and Michael Mann, as the little brother, Sherman, are the "Joe and Mabel" principals. Joe's strenuous attempts to maintain the molasses pace of his romance with Mabel have a tendency to develop outrageous complications. The episodes are punctuated by periodic rhabarbs with traffic policemen, fellow hackies and a wide circle of nosy friends.

OFF ON VACATION Cameron Mackenzie, assistant to General Manager Philip Merrymann of WICC and WICC-TV, began his summer holiday yesterday. He will spend most of it at his home in Westport. Another WICC vacationer is Sales Manager Richard L. Chalmers, who is visiting in Massachusetts.

CHILDREN'S PROGRAM A children's television program that has been a hit for 15 months in Pittsburgh will make its bow on NBC-TV, Saturday, Aug. 20. The program, "Children's Corner," will be telecast on four successive Saturdays from 10:30 to 11 a.m., through Sept. 10. "Children's Corner" is a highly varied blend of fantasy and fact, instruction and fun, song and story. It is the creation of two young puppets, Joe Carey and Fred Rogers, who work with puppets. Miss Carey holds the spotlight on stage and writes the lyrics. Rogers works the puppets backstage, is the organizer, writes the scripts and composes the original music. The program will take the time spot of the vacationing "Paul Winchell-Jerry Hathorn Show" for four weeks. The latter program will return Sept. 17.

ATOMIC ENERGY A series of five broadcasts from the First International Conference on the Peaceful Uses of Atomic Energy, meeting under UN auspices for a two-week period in Geneva, will bring NBC listeners the sense and trend of this international scientific meeting. There will be WRCB broadcasts tonight (10:10-10:30 p.m.); Wednesday (10:10-10:30 p.m.); Thursday (10:10-10:30 p.m.); Friday (10:10-10:30 p.m.); and the following Friday, Aug. 19 (10:10-11 p.m.). They will be taped-recording in Geneva a day or more in advance for presentation at these times.

ATOMIC PRICE WAR GENEVA, Aug. 9—(UP) The first atomic price war appeared to be underway here today. When associated electrical industries of Britain announced to the International Atomic Conference here today that they would sell atomic reactors for about \$210,000, Bendis of America promptly said it would sell reactors for \$200,000.

NO HALFWAY LONDON, Aug. 9—(UP) British censors, who allow models to appear on the stage in the nude if they don't move, apparently don't go for halfway-measures as far as unclad girls are concerned. Dancer Denise Vane said she sent the Lord Chamberlain's office pictures of her poses and was told they would be just fine if she removed her shoes. The shoes were all she was wearing.

Tomorrow's Television Program

6 A.M. Off the Air
7 A.M. Morning Show Today
7:30 A.M. Off the Air
8 A.M. Off the Air
9 A.M. Off the Air
10 A.M. Off the Air
11 A.M. Off the Air
11:30 A.M. Off the Air
12:30 P.M. Off the Air
1 P.M. Off the Air
2 P.M. Off the Air
3 P.M. Off the Air
4 P.M. Off the Air
5 P.M. Off the Air
6 P.M. Off the Air
7 P.M. Off the Air
8 P.M. Off the Air
9 P.M. Off the Air
10 P.M. Off the Air
11 P.M. Off the Air
12:30 A.M. Off the Air

Tomorrow's Radio Program

6 A.M. 6:30 7 A.M. 7:30
WNAH Angel... WABC... WABC... WABC...
6 A.M. 6:30 7 A.M. 7:30
WNAH Angel... WABC... WABC... WABC...

TARDY WINDOW

SAN DIEGO, Calif. — (AP) A window on a downtown store was covered for weeks with a sign saying "Broken Window." After a week, somebody wrote below the sign, "Then why don't you fix it?" Three weeks went by and a petulant postscript appeared. "You've had plenty of time to fix it." The window still hasn't been fixed.

BRASS CITY MAN KILLED

KIN HURT, IN VIRGINIA ASHLAND, Va., Aug. 8—(AP) Peter Pettaway, 53, of Waterbury, Conn., was fatally injured near here Sunday in a three-car collision on U. S. 1. Six persons were injured in the crash. State Trooper W. R. Brett said the accident occurred when the northbound car driven by Pettaway attempted to turn left into the driveway of a gas station. A south-

bound car driven by Robert Harris, 53, of Richmond, banged into the front of the Pettaway vehicle and in turn was rammed from the rear by a car containing three Camp Lejeune, N. C. Marines. Seriously injured were Pettaway's daughter-in-law, Mrs. Fannie Pettaway of Waterbury, who was riding with him; and Evelyn Walker, 40, of Richmond, an occupant of the Harris car. Harris and the three Marines—Walter Cox Jr., 18; Howard Walters, 27, and Albert Chavez, 18—were not seriously hurt.

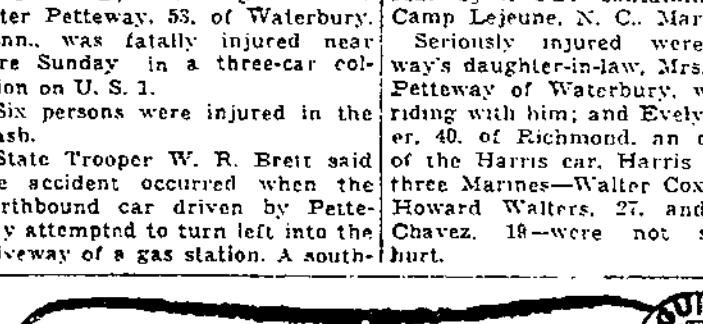
Only \$6.60 Per Month Per \$1,000 On a 20-Year Home Loan!

Table with 2 columns: AMOUNT OF LOAN, PAYMENT PER MONTH. Values range from \$8,000 to \$12,000 and \$52.80 to \$79.20.

Includes Principal and Interest

Park City - Home Savings and LOAN ASSOCIATION 938 BROAD ST.—Opp. the Public Library—Bridgeport WE'LL MOVE SOON TO STATE and BROAD

Necessary Accessory!



Eyeglasses may be necessary to your eye health... and they can be a fashionable accessory, too, when you wear frames chosen at our Eye Style Center.

FRITZ & HAWLEY

1030 MAIN ST., W.P. — PHONE EDISON 5-1109